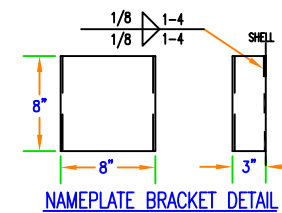
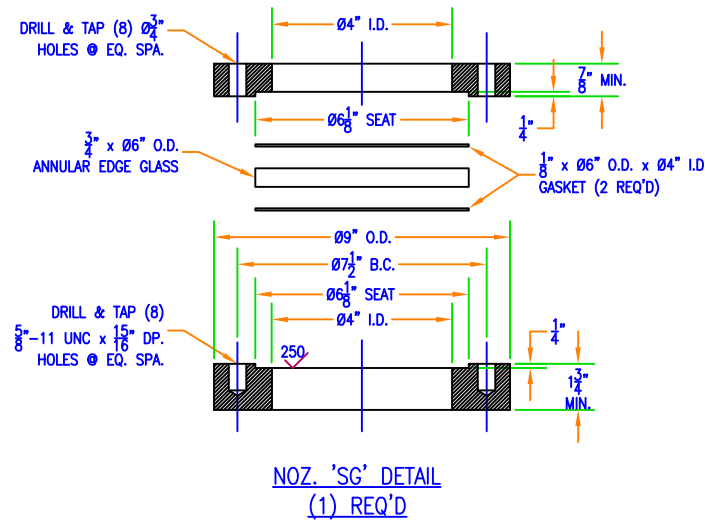
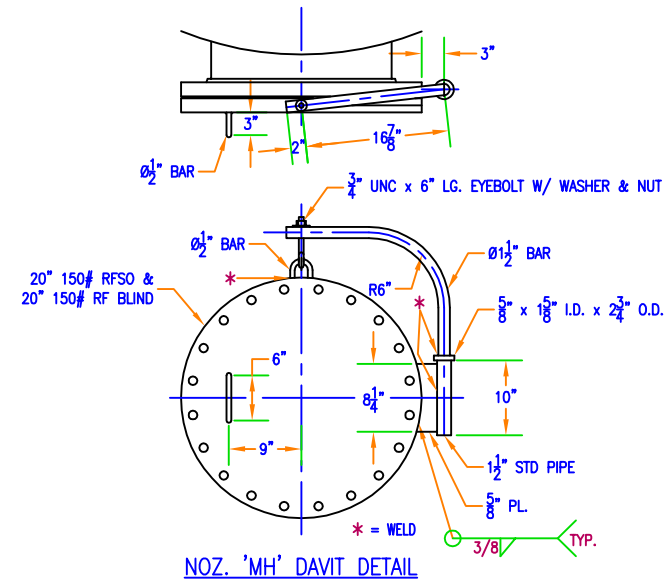
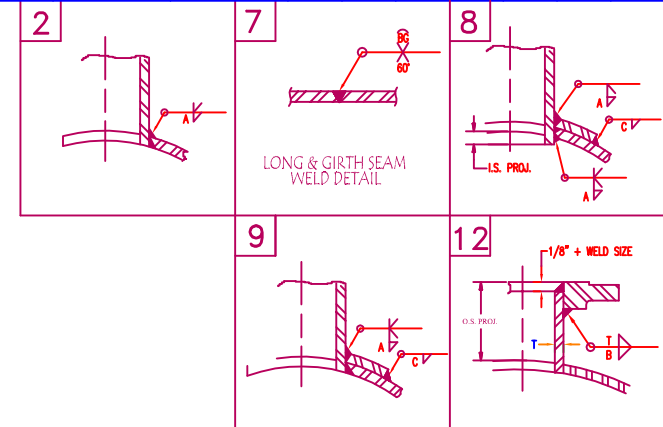




MARK	QTY	SERVICE	SIZE	RATING	TYPE	FLG. MAT'L	NECK			REPAD		PROJ.		WELD DETAIL		WELD SIZE		
							SCH.	WALL	MAT'L	WIDTH x THK.	MAT'L	O.S.	I.S.			A	B	C
N1	1	FEED IN	6"	150#	R.F.S.O.	SA-105	STD	–	SA-106 B	1-1/2" x 3/8"	SA-516-70	6"	DWG	8	12	1/4"	7/16"	3/16"
N2	1	LIQUID OUTLET	4"	150#	R.F.S.O.	SA-105	XS	–	SA-106 B	–	–	DWG	–	2	12	5/16"	1/2"	–
N3	1	VAPOR OUTLET	6"	150#	R.F.S.O.	SA-105	STD	–	SA-106 B	1-1/2" x 3/8"	SA-516-70	DWG	–	9	12	1/4"	7/16"	3/16"
MH	1	MANHOLE	20"	150#	R.F.S.O.	SA-105	STD	–	SA-106 B	3" x 3/8"	SA-516-70	6"	–	9	12	5/16"	9/16"	3/16"
SG	1	SIGHT GLASS	4"	150#	PAD FLG.	–	–	–	SA-516-70	–	–	–	–	2	–	1/4"	–	–
LT	2	LEVEL TRANSMITTER	3"	150#	R.F.S.O.	SA-105	STD	–	SA-106 B	–	–	6"	–	2	12	3/16"	5/16"	–

[illegible]

UNLESS OTHERWISE NOTED:
ALL INTERNAL NOZZLE PROJECTIONS TO BE RADIUS
EXPPOSED INTERNAL NOZZLE EDGES TO BE ROUNDED OR CHAMFERED
ALL MANWAYS RADIUS NECK I.D.
ALL NOZZLES TO BE FLUSH WITH VESSEL I.D.
ALL BOLT HOLES TO STRADDLE VESSEL MAJOR CENTERLINES.
ALL LONGITUDINAL SEAMS OFFSET MIN. OF FIVE TIMES THE SHELL THICKNESS.
ALL REPADS & SCAB PLATES TO HAVE 1/4" NPT WELD HOLE.
USE MALLEABLE IRON PLUGS WHEN WELDING CPLGS.
ALL NOZZLES TO BE COVERED FOR SHIPPING
DO NOT WELD OVER ANY PRESSURE SEAM UNLESS OTHERWISE NOTED.

CONSTRUCTION CODE : ASME SECTION VIII DIV. 1 2015 EDITION CODE STAMP AND INSPECTION : ARISE, INC. WPS'S : S1, FC1, T1, S8-1, FC8-1, TB-1			
National Board #  RT-4 Certified by MASON MFG. LLC W SHELL TUBE JACKET		SHELL DESIGN PRESSURE (psig) 14.7/-15 DESIGN TEMP. (°F) 572/-20 CORR. ALLOW 1/16" HYDROTEST (psig) 20 SEISMIC IBC 2015 WIND (mph) IBC 2015 SPECIFIC GRAVITY 1.0 NDE SPOT X-RAY, "T"-JOINTS HEAT TREATMENT NONE IMPACT TEST EXEMPT	
Manufacturer's Serial # 16-6692 Year Built 2016			
NAME PL. BRK. SA-240-316/304/L		IMPACT TEST EXEMPT	
MATERIAL (MATERIAL NOTED xxx/L IS DUAL GRADE)			
SHELL : SA-516-70		PACKING SUPPORT BAR/RING : SA-36	
HEADS : SA-516-70		SIGHTGLASS BEZEL : SA-240-304/L	
SUPPORTS/SCAB PL. : SA-516-70		DAWT : C.S.	
VACUUM RING : SA-36		NOZ. 'N1' END PL. : SA-516-70	
GASKETS : CG825		NOZ. 'N1' SUPPORT : SA-36	
EXTERNAL BOLTING : SA-193-B7, SA-194-2H (ZINC)		VORTEX BREAKER : SA-516-70	
INTERNAL BOLTING : C.S.			
LIFT LUG : SA-516-70			
IMPACT TEST EXEMPT PER UCS-66(c) & UC-20(f)			
GENERAL NOTES			
PAINT : SANDBLAST & PAINT EXTERIOR C.S. WITH SHOP PRIMER PER MANUFACTURERS SPECIFICATIONS.			
WEIGHT EMPTY = 5,200 lbs		FULL OF H ₂ O = 31,050 lbs	
		VOL. = 3,096 gal	
REFERENCE DWG. & SPECS.:			
		MASON Manufacturing, LLC P.O. Box 3577/1645 N. Railroad Ave. Decatur, IL 62526 PH. 217/422-2770 Fax 217/422-2704	
71" I.D. x 13'-1" W.L./W.L. (F-63) DRYER VESSEL		DRAWN BY JDK DATE: 7/11/16 APPROVED BY: _____ Q.C. CHECK BY: _____ No. REQ'D. (1)	
CHS ANNAWAN ANNAWAN, IL		DRAWING NUMBER REV. 16-6692 SHT. 1 of 1 0	